

// ISOBARIC HOSE

// Atbi3000,Atbi4000	1
// Atsi3000,Atsi4000	2
// Atsi5000,Atsi6000	3

// GEMPRO

// ZM-2SK,ZM-E4SF	4
// ZM-E4SFS,ZM-E6SF	5
// SHIELDPRO	6
// Frozen	7
// High Temperature Hose	8
// Jack Hose,Hot Oiler Hose	9
// Fire Supression Hose	10
// Twin Hose	11
// Steam Hose	12

// STANDARD HOSE

// ZM-1SN	13
// ZM-2SN	14
// ZM-SC	15
// ZM-R16,ZM-R17	16
// ZM-2ST,ZM-3SN	17
// ZM-4SP,ZM-4SH	18
// ZM-R12,ZM-R13	19
// ZM-R15	20

// CLEANING HOSE

// PW HOSE,Water Blasting Hose	21
// Sewer Jetting Hose	22

// TEXTILE HOSE

// ZM-1TE,ZM-2TE	23
// ZM-3TE	24
// ZM-R3,ZM-R4	25
// ZM-R5,ZM-R6	26
// Air Hose	27
// Water Hose	28
// Fuel&Oil Hose,Chemical Hose	29
// Multipurpose Hose,Carbon Free Hose	30
// LNG CNG HOSE	31

// THERMPLASTIC HOSE

// ZM-R7,ZM-R8	32
// Paint Spray Hose,ZM-R14	33

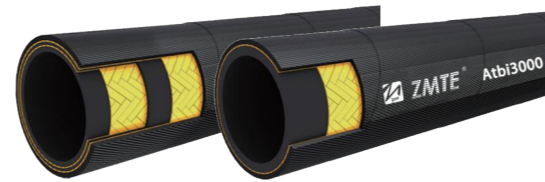
// INDUSTRIAL HOSE

// Water Suction Hose	34
// Oil Suction Hose	35
// Mud suction and Discharge hose	36
// Drilling Hose	37
// Cementing Hose,Oil Stand Hose	38
// Sanblasting Hose,Concrete Hose	39
// Pilot Line Hose	40
// Metal Hose	41
// A/C HOSE	42

Atbi3000

ISO18752

- // Inner tube: Oil resistant synthetic rubber
- // Reinforcement: One braid of high-tensile steel wire (sizes 1/4, 5/16, 3/8, 1/2),
Two braid of high-tensile steel wire (sizes 5/8, 3/4, 1)
- // Cover: Environment and abrasion resistant synthetic rubber
- // Temperature Range: -40°F to 212°F (-40°C to 100°C), (Max 125°C intermittent)



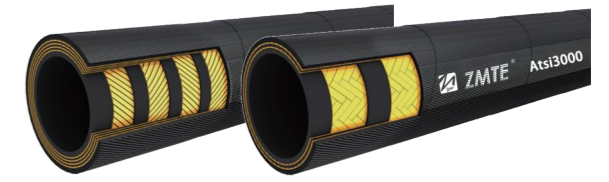
Product Number	inch in	ID mm	C.O.D mm	Max W.P.		Min B.P.		Min B.R. mm	Weight Kg/m	Unit Price USD/m
				Bar	Psi	Bar	Psi			
E73-04-06	1/4	6.6	12.2	205	2973	820	11892	45	0.20	*
E73-05-08	5/16	8.2	13.8	205	2973	820	11892	50	0.24	*
E73-06-10	3/8	10.0	15.8	205	2973	820	11892	60	0.28	*
E73-08-13	1/2	13.2	19.2	205	2973	820	11892	80	0.36	*
E73-10-16	5/8	16.3	24.2	205	2973	820	11892	95	0.62	*
E73-12-19	3/4	19.5	28.2	205	2973	820	11892	115	0.85	*
E73-16-25	1	25.8	35.5	205	2973	820	11892	185	1.23	*

Impulse cycles tested up to 1,000,000 cycles.

Atsi3000

ISO18752

- // Inner tube: Oil resistant synthetic rubber
- // Reinforcement: Two braid of high-tensile steel wire (sizes 3/8 - 1),
Four alternating layers of spiral high-tensile steel wire (sizes 1 1/4 - 2)
- // Cover: Environment and abrasion resistant synthetic rubber
- // Temperature Range: -40°F to 250°F (-40°C to 120°C), (Max 125°C intermittent)

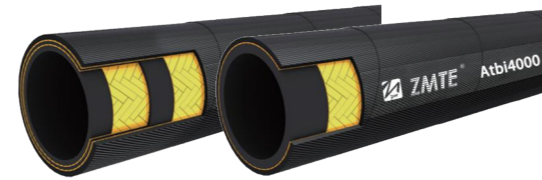


Product Number	inch in	ID mm	C.O.D mm	Max W.P.		Min B.P.		Min B.R. mm	Weight Kg/m	Unit Price USD/m
				Bar	Psi	Bar	Psi			
E93-06-10	3/8	9.9	18.6	205	2973	820	11893	70	0.43	*
E93-08-13	1/2	13.2	21.8	205	2973	820	11893	85	0.56	*
E93-10-16	5/8	16.3	25.2	205	2973	820	11893	110	0.67	*
E93-12-20	3/4	19.5	28.9	205	2973	820	11893	145	0.91	*
E93-16-25	1	25.8	35.5	205	2973	820	11893	155	1.23	*
E93-20-32	1 1/4	31.5	44.0	205	2973	820	11893	195	2.10	*
E93-24-38	1 1/2	38.0	51.5	205	2973	820	11893	265	2.84	*
E93-32-51	2	51.0	65.1	205	2973	820	11893	365	3.73	*

Atbi4000

ISO18752

- // Inner tube: Oil resistant synthetic rubber
- // Reinforcement: One braid of high-tensile steel wire (sizes 1/4),
Two braid of high-tensile steel wire (sizes 5/16, 3/8, 1/2, 5/8, 3/4, 1)
- // Cover: Environment and abrasion resistant synthetic rubber
- // Temperature Range: -40°F to 212°F (-40°C to 100°C), (Max 125°C intermittent)



Product Number	inch in	ID mm	C.O.D mm	Max W.P.		Min B.P.		Min B.R. mm	Weight Kg/m	Unit Price USD/m
				Bar	Psi	Bar	Psi			
E74-04-06	1/4	6.6	12.0	275	3989	1100	15956	45	0.21	*
E74-05-08	5/16	8.2	15.1	275	3989	1100	15956	55	0.33	*
E74-06-10	3/8	10.0	17.0	275	3989	1100	15956	65	0.42	*
E74-08-13	1/2	13.2	20.5	275	3989	1100	15956	85	0.55	*
E74-10-16	5/8	16.3	24.2	275	3989	1100	15956	130	0.71	*
E74-12-19	3/4	19.5	28.2	275	3989	1100	15956	160	0.91	*

Impulse cycles tested up to 1,000,000 cycles.

Atsi4000

ISO18752

- // Inner tube: Oil resistant synthetic rubber
- // Reinforcement: Two braid of high-tensile steel wire (sizes 3/8, 1/2),
Four alternating layers of spiral high-tensile steel wire (sizes 5/8 - 1 1/2),
Six alternating layers of spiral high-tensile steel wire (sizes 2)
- // Cover: Environment and abrasion resistant synthetic rubber
- // Temperature Range: -40°F to 212°F (-40°C to 100°C), (Max 125°C intermittent)



Product Number	inch in	ID mm	C.O.D mm	Max W.P.		Min B.P.		Min B.R. mm	Weight Kg/m	Unit Price USD/m
				Bar	Psi	Bar	Psi			
E94-06-08	3/8	9.9	18.6	275	3989	1100	15954	70	0.46	*
E94-08-13	1/2	13.2	21.8	275	3989	1100	15954	85	0.61	*
E94-10-16	5/8	16.3	25.7	275	3989	1100	15954	110	0.86	*
E94-12-19	3/4	19.5	29.0	275	3989	1100	15954	135	1.09	*
E94-16-25	1	25.8	36.5	275	3989	1100	15954	170	1.67	*
E94-20-32	1 1/4	31.5	44.6	275	3989	1100	15954	255	2.40	*
E94-24-38	1 1/2	38.0	51.5	275	3989	1100	15954	305	2.84	*
E94-32-51	2	51.0	68.4	275	3989	1100	15954	475	6.94	*

Dimensions shown may be changed without prior notice

Dimensions shown may be changed without prior notice

Atsi5000

ISO18752

- // Inner tube: Oil resistant synthetic rubber
- // Reinforcement: Four alternating layers of spiral high-tensile steel wire (sizes 3/8 - 1 1/2),
Six alternating layers of spiral high-tensile steel wire (sizes 2 - 2 1/2)
- // Cover: Environment and abrasion resistant synthetic rubber
- // Temperature Range: -40°F to 250°F(-40°C to 120°C),(Max 125°C intermittent)



Product Number	inch in	ID mm	C.O.D mm	Max W.P.		Min B.P.		Min B.R. mm	Weight Kg/m	Unit Price USD/m
				Bar	Psi	Bar	Psi			
E95-06-08	3/8	9.9	19.2	350	5076	1400	20305	95	0.57	*
E95-08-13	1/2	13.2	22.3	350	5076	1400	20305	110	0.71	*
E95-10-16	5/8	16.3	26.4	350	5076	1400	20305	140	0.95	*
E95-12-19	3/4	19.5	29.0	350	5076	1400	20305	160	1.09	*
E95-16-25	1	25.8	36.5	350	5076	1400	20305	205	1.81	*
E95-20-32	1 1/4	31.5	45.0	350	5076	1400	20305	280	2.55	*
E95-24-38	1 1/2	38.0	52.4	350	5076	1400	20305	330	3.11	*
E95-32-51	2	51.0	70.8	350	5076	1400	20305	395	6.31	*
E95-40-64	2 1/2	64.0	87.6	350	5076	1400	20305	800	9.06	*

ZM-2SK

- // Inner tube: Oil resistant synthetic rubber
- // Reinforcement: Two braid of high-tensile steel wire
- // Cover: Environment and abrasion resistant synthetic rubber
- // Temperature Range: -40°F to 212°F(-40°C to 100°C)
- // Applications: Super High pressure compact hose with greater flexibility



Product Number	inch in	ID mm	W.D mm	C.O.D mm	Max W.P.		Min B.P.		Min B.R. mm	Weight Kg/m	Unit Price USD/m
					Bar	Psi	Bar	Psi			
2SK-04-06	1/4	6.6	11.4	13.3	450	6525	1800	26100	45	0.29	*
2SK-05-08	5/16	8.2	13.2	15.2	420	6090	1680	24360	60	0.36	*
2SK-06-10	3/8	9.8	15.3	17.2	385	5583	1540	22330	70	0.43	*
2SK-08-13	1/2	13.2	18.5	20.6	350	5075	1400	20300	90	0.56	*
2SK-10-16	5/8	16.3	22.1	24.2	290	4205	1160	16820	130	0.68	*
2SK-12-19	3/4	19.5	26	28.3	280	4060	1120	16240	160	0.86	*
2SK-16-25	1	25.7	33.2	35.9	200	2900	800	11600	210	1.23	*
2SK-20-32	1 1/4	32.4	40.2	42.9	175	2538	700	10150	300	1.86	*

Impulse cycles: 200,000 Tested up to 400,000 cycles
MSHA / smooth cover on request

Atsi6000

ISO18752

- // Inner tube: Oil resistant synthetic rubber
- // Reinforcement: Four alternating layers of spiral high-tensile steel wire (sizes 3/8 - 1),
Six alternating layers of spiral high-tensile steel wire (sizes 1 1/4 - 2)
- // Cover: Environment and abrasion resistant synthetic rubber
- // Temperature Range: -40°F to 250°F(-40°C to 120°C),(Max 125°C intermittent)



Product Number	inch in	ID mm	C.O.D mm	Max W.P.		Min B.P.		Min B.R. mm	Weight Kg/m	Unit Price USD/m
				Bar	Psi	Bar	Psi			
E96-06-08	3/8	9.9	19.9	420	6092	1680	24368	95	0.63	*
E96-08-13	1/2	13.2	22.3	420	6092	1680	24368	110	0.77	*
E96-10-16	5/8	16.3	26.4	420	6092	1680	24368	140	0.95	*
E96-12-19	3/4	19.5	30.1	420	6092	1680	24368	160	1.34	*
E96-16-25	1	25.8	36.7	420	6092	1680	24368	205	1.92	*
E96-20-32	1 1/4	31.5	47.4	420	6092	1680	24368	280	3.37	*
E96-24-38	1 1/2	38.0	55.6	420	6092	1680	24368	330	4.56	*
E96-32-51	2	51.0	71.4	420	6092	1680	24368	395	6.31	*

ZM-E4SF

- // Inner tube: Oil resistant synthetic rubber
- // Reinforcement: Four alternating layers of spiraled high-tensile Steel wire
- // Cover: Environment and abrasion resistant synthetic rubber
- // Temperature Range: -40°F to 250°F(-40°C to 120°C),(Max 125°C intermittent)



Product Number	inch in	ID mm	C.O.D mm	Max W.P.		Min B.P.		Min B.R. mm	Weight Kg/m	Unit Price USD/m
				Bar	Psi	Bar	Psi			
E4SF-06-10	3/8	9.9	19.9	450	6527	1800	26107	80	0.63	*
E4SF-08-13	1/2	13.2	22.3	420	6092	1680	24366	90	0.77	*
E4SF-10-16	5/8	16.3	26.4	350	5076	1400	20305	100	0.95	*
E4SF-12-19	3/4	19.5	29	350	5076	1400	20305	120	1.09	*
E4SF-16-25	1	25.8	36.5	350	5076	1400	20305	150	1.81	*
E4SF-20-32	1 1/4	31.5	45	350	5076	1400	20305	210	2.55	*
E4SF-24-38	1 1/2	38.0	51.9	300	4351	1200	17405	250	3.03	*
E4SF-32-51	2	51.0	66.4	250	3626	1000	14504	315	4.24	*
E4SF-40-64	2 1/2	64.0	82.3	140	2031	560	8122	700	6.30	*

Impulse cycles tested up to 1,000,000 cycles.

Dimensions shown may be changed without prior notice

Dimensions shown may be changed without prior notice

ZM-E4SFS



- // Inner tube: Oil resistant synthetic rubber
- // Reinforcement: Four alternating layers of spiraled high-tensile Steel wire
- // Cover: Environment and abrasion resistant synthetic rubber
- // Temperature Range: -40°F to 250°F(-40°C to 120°C),(Max 125°C intermittent)

Product Number	inch in	ID mm	C.O.D mm	Max W.P.		Min B.P.		Min B.R. mm	Weight Kg/m	Unit Price USD/m
				Bar	Psi	Bar	Psi			
E4SFS-06-10	3/8	9.9	19.9	450	6527	1800	26107	80	0.63	*
E4SFS-08-13	1/2	13.2	22.3	420	6092	1680	24366	90	0.77	*
E4SFS-10-16	5/8	16.3	26.4	420	6092	1680	24366	120	0.95	*
E4SFS-12-19	3/4	19.5	30.1	420	6092	1680	24366	150	1.34	*
E4SFS-16-25	1	25.8	36.7	420	6092	1680	24366	200	1.92	*
E4SFS-20-32	1 1/4	31.5	45	420	6092	1680	24366	250	2.55	*

Impulse cycles tested up to 1,000,000 cycles.

ZM-E6SF

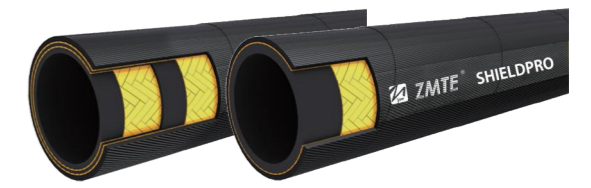


- // Inner tube: Oil resistant synthetic rubber
- // Reinforcement: Six alternating layers of spiral high-tensile steel wire
- // Cover: Environment and abrasion resistant synthetic rubber
- // Temperature Range: -40°F to 250°F(-40°C to 120°C),(Max 125°C intermittent)

Product Number	inch in	ID mm	C.O.D mm	Max W.P.		Min B.P.		Min B.R. mm	Weight Kg/m	Unit Price USD/m
				Bar	Psi	Bar	Psi			
E6SF-20-32	1 1/4	31.5	47.4	450	6527	1800	26107	260	3.37	*
E6SF-24-38	1 1/2	38.0	55.6	420	6092	1680	24366	315	4.56	*
E6SF-32-51	2	51.0	71.4	420	6092	1680	24366	395	6.31	*
E6SF-40-64	2 1/2	64.0	87.6	350	5076	1400	20305	800	9.06	*

Impulse cycles tested up to 1,000,000 cycles.

SHIELDPRO



- // Inner tube: Oil resistant synthetic rubber
- // Reinforcement: One or two braid of high-tensile steel wire
- // Cover: Rubber + UHMWPE
- // Temperature Range: -40°F to 212°F(-40°C to 100°C)

Product Number	inch in	ID mm	W.D mm	C.O.D mm	Max W.P.		Min B.P.		Min B.R. mm	Weight Kg/m	Unit Price USD/m
					Bar	Psi	Bar	Psi			
1W											
1SD-04-06	1/4	6.60	10.0	12.5	225	3260	900	13050	75	0.18	*
1SD-05-08	5/16	8.20	11.7	13.8	220	3120	860	12470	85	0.20	*
1SD-06-10	3/8	9.80	13.6	16.2	180	2610	720	10440	90	0.28	*
1SD-08-13	1/2	13.20	17.0	19.4	160	2320	640	9280	130	0.35	*
1SD-10-16	5/8	16.30	20.4	22.6	130	1885	520	7540	150	0.43	*
1SD-12-19	3/4	19.50	23.8	26.2	110	1520	420	6090	180	0.52	*
1SD-16-25	1	25.70	31.2	33.6	90	1280	352	5100	230	0.84	*
2W											
2SD-04-06	1/4	6.60	11.2	13.2	400	5800	1600	23200	75	0.28	*
2SD-05-08	5/16	8.20	13.0	15.1	350	5076	1400	20300	85	0.34	*
2SD-06-10	3/8	9.80	15.0	17.0	330	4785	1320	19140	90	0.42	*
2SD-08-13	1/2	13.20	18.4	20.5	280	3990	1100	15950	130	0.54	*
2SD-10-16	5/8	16.30	22.0	24.2	250	3625	1000	14500	170	0.66	*
2SD-12-19	3/4	19.50	26.0	28.2	220	3120	860	12470	200	0.85	*
2SD-16-25	1	25.70	33.0	35.6	170	2390	660	9570	250	1.21	*

Impulse cycles tested up to 1,000,000 cycles.

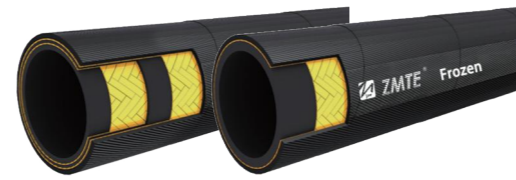
Dimensions shown may be changed without prior notice

Dimensions shown may be changed without prior notice

Frozen

EN853/ ISO 1436

- // Inner tube: Synthetic Nitrile rubber
- // Reinforcement: One or two braid of high-tensile steel wire
- // Cover: Environment resistant synthetic rubber
- // Temperature Range: -67°F to 212°F (-55°C to 100°C)
- // Application: Medium pressure hydraulic application, using petroleum or water based hydraulic fluids.



Product Number	inch in	ID mm	W.D mm	C.O.D mm	Max W.P.		Min B.P.		Min B.R. mm	Weight Kg/m	Unit Price USD/m
					Bar	Psi	Bar	Psi			
1W											
1FZ-04-06	1/4	6.6	11.0	13.0	225	3260	900	13040	100	0.22	*
1FZ-05-08	5/16	8.2	12.7	14.7	215	3120	860	12480	115	0.26	*
1FZ-06-10	3/8	9.8	14.8	17.2	180	2610	720	10440	130	0.33	*
1FZ-08-13	1/2	13.2	18.0	20.5	160	2320	640	9280	180	0.40	*
1FZ-10-16	5/8	16.3	21.3	23.8	130	1890	520	7560	200	0.49	*
1FZ-12-19	3/4	19.5	25.0	27.8	105	1520	420	6080	240	0.63	*
1FZ-16-25	1	25.7	33.3	35.9	88	1280	352	5120	300	0.95	*
1FZ-20-32	1 1/4	32.4	40.8	44.0	63	910	252	3640	420	1.27	*
1FZ-24-38	1 1/2	38.9	46.8	50.8	50	720	200	2880	500	1.50	*
1FZ-32-51	2	51.5	60.2	64.3	40	580	160	2320	630	2.07	*
2W											
2FZ-04-06	1/4	6.6	12.7	14.7	400	5800	1600	23200	100	0.37	*
2FZ-05-08	5/16	8.2	14.5	16.5	350	5075	1400	20300	115	0.41	*
2FZ-06-10	3/8	9.8	16.5	18.7	330	4785	1320	19140	130	0.52	*
2FZ-08-13	1/2	13.2	19.6	21.9	280	4060	1120	16240	180	0.62	*
2FZ-10-16	5/8	16.3	23.0	25.3	250	3625	1000	14500	200	0.78	*
2FZ-12-19	3/4	19.5	26.8	29.3	220	3190	880	12760	240	0.96	*
2FZ-16-25	1	25.7	34.8	37.9	170	2465	680	9860	300	1.40	*
2FZ-20-32	1 1/4	32.4	44.5	47.5	130	1885	520	7540	420	1.96	*
2FZ-24-38	1 1/2	38.9	50.8	54.6	90	1305	360	5220	500	2.27	*
2FZ-32-51	2	51.5	63.5	67.4	80	1160	320	4640	630	2.98	*

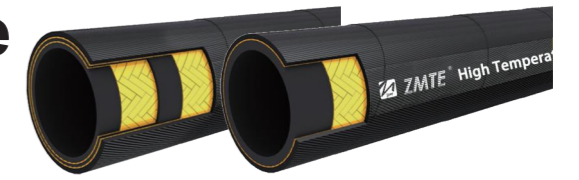
Impulse cycles tested up to 1,000,000 cycles.

7 HYDRAULIC HOSE

High Temperature Hose

EN853/ ISO 1436

- // Inner tube: Synthetic Nitrile rubber
- // Reinforcement: One or two braid of high-tensile steel wire
- // Cover: Environment resistant synthetic rubber
- // Temperature Range: -4°F to 275°F (-20°C to 135°C)
- // Application: Medium pressure hydraulic application, using petroleum or water based hydraulic fluids.



Product Number	inch in	ID mm	W.D mm	C.O.D mm	Max W.P.		Min B.P.		Min B.R. mm	Weight Kg/m	Unit Price USD/m
					Bar	Psi	Bar	Psi			
1W											
1HT-04-06	1/4	6.6	11.0	13.0	225	3260	900	13040	100	0.22	*
1HT-05-08	5/16	8.2	12.7	14.7	215	3120	860	12480	115	0.26	*
1HT-06-10	3/8	9.8	14.8	17.2	180	2610	720	10440	130	0.33	*
1HT-08-13	1/2	13.2	18.0	20.5	160	2320	640	9280	180	0.40	*
1HT-10-16	5/8	16.3	21.3	23.8	130	1890	520	7560	200	0.49	*
1HT-12-19	3/4	19.5	25.0	27.8	105	1520	420	6080	240	0.63	*
1HT-16-25	1	25.7	33.3	35.9	88	1280	352	5120	300	0.95	*
1HT-20-32	1 1/4	32.4	40.8	44.0	63	910	252	3640	420	1.27	*
1HT-24-38	1 1/2	38.9	46.8	50.8	50	720	200	2880	500	1.50	*
1HT-32-51	2	51.5	60.2	64.3	40	580	160	2320	630	2.07	*
2W											
2HT-04-06	1/4	6.6	12.7	14.7	400	5800	1600	23200	100	0.37	*
2HT-05-08	5/16	8.2	14.5	16.5	350	5075	1400	20300	115	0.41	*
2HT-06-10	3/8	9.8	16.5	18.7	330	4785	1320	19140	130	0.52	*
2HT-08-13	1/2	13.2	19.6	21.9	280	4060	1120	16240	180	0.62	*
2HT-10-16	5/8	16.3	23.0	25.3	250	3625	1000	14500	200	0.78	*
2HT-12-19	3/4	19.5	26.8	29.3	220	3190	880	12760	240	0.96	*
2HT-16-25	1	25.7	34.8	37.9	170	2465	680	9860	300	1.40	*
2HT-20-32	1 1/4	32.4	44.5	47.5	130	1885	520	7540	420	1.96	*
2HT-24-38	1 1/2	38.9	50.8	54.6	90	1305	360	5220	500	2.27	*
2HT-32-51	2	51.5	63.5	67.4	80	1160	320	4640	630	2.98	*

Impulse cycles tested up to 1,000,000 cycles.
Blue Cover on request.

8 HYDRAULIC HOSE

Dimensions shown may be changed without prior notice

Dimensions shown may be changed without prior notice

Jack Hose



- // Inner tube: Oil resistant synthetic rubber
- // Reinforcement: Two braid of high-tensile steel wire
- // Cover: Environment resistant synthetic rubber
- // Temperature Range: -40°F to 212°F(-40°C to 100°C)
- // Application: Hydraulic jack applications with petroleum and water-based fluids.
Suitable for mineral and vegetable oil based fluids.

Product Number	inch in	ID mm	W.D mm	C.O.D mm	Max W.P.		Min B.P.		Min B.R. mm	Weight Kg/m	Unit Price USD/m
					Bar	Psi	Bar	Psi			
2JA-04-06	1/4	6.6	11.2	13.2	700	10150	1400	20300	50	0.28	*
2JA-06-10	3/8	9.8	15.0	17.0	700	10150	1400	20300	65	0.42	*

Impulse cycles tested up to 1,000,000 cycles.

Fire Suppression Hose



- // Inner tube: Oil resistant synthetic rubber
- // Reinforcement: One wire of high-tensile steel
- // Cover: Red synthetic rubber resistant to oil, weather and abrasion
- // Temperature Range: -40°F to 212°F(-40°C to 100°C)

Product Number	inch in	ID mm	W.D mm	C.O.D mm	Max W.P.		Min B.P.		Min B.R. mm	Weight Kg/m	Unit Price USD/m
					Bar	Psi	Bar	Psi			
1FH-04-06	1/4	6.6	12.7	14.3	225	3265	900	13050	100	0.32	*
1FH-06-10	3/8	9.8	16.5	18.2	180	2610	720	10440	125	0.48	*
1FH-08-13	1/2	13.2	19.6	21.3	160	2320	640	9280	180	0.57	*
1FH-12-19	3/4	19.5	26.8	28.9	105	1525	420	6095	240	0.85	*

Impulse cycles tested up to 1,000,000 cycles.

Hot Oiler Hose



- // Inner tube: Oil resistant synthetic rubber
- // Reinforcement: Two braids of high tensile steel wire
- // Cover: Environment resistant synthetic rubber
- // Temperature Range: -40°F to 275°F(-40°C to 135°C),(Max 149°C intermittent)
- // Application: Hot asphalt, glue, tar, oil, wax; In-plant transfer, delivery trucks, construction, and more

Product Number	inch in	ID mm	C.O.D mm	Max W.P.		Min B.P.		Min B.R. mm	Weight Kg/m	Unit Price USD/m
				Bar	Psi	Bar	Psi			
HO-24-38	1 1/2	38.2	50.8	155	2250	465	6750	330	2.36	*

Impulse cycles tested up to 1,000,000 cycles.

Twin Hose



ISO 11237/ EN857

- // Inner tube: Oil resistant synthetic rubber
- // Reinforcement: One or two braid of high-tensile steel wire
- // Cover: Environment resistant synthetic rubber
- // Temperature Range: -40°F to 212°F(-40°C to 100°C)
- // Application: High pressure service with tight bends for petroleum and water-based hydraulic fluids.

Product Number	inch in	ID mm	W.D mm	C.O.D mm	Max W.P.		Min B.P.		Min B.R. mm	Weight Kg/m	Unit Price USD/m
					Bar	Psi	Bar	Psi			
1W											
1TW-04-06	1/4	6.60	10.0	12.5	225	3260	900	13050	75	0.18	*
1TW-05-08	5/16	8.20	11.7	13.8	220	3120	860	12470	85	0.20	*
1TW-06-10	3/8	9.80	13.6	16.2	180	2610	720	10440	90	0.28	*
1TW-08-13	1/2	13.20	17.0	19.4	160	2320	640	9280	130	0.35	*
1TW-10-16	5/8	16.30	20.4	22.6	130	1885	520	7540	150	0.43	*
1TW-12-19	3/4	19.50	23.8	26.2	110	1520	420	6090	180	0.52	*
1TW-16-25	1	25.70	31.2	33.6	90	1280	352	5100	230	0.84	*
2W											
2TW-04-06	1/4	6.60	11.2	13.2	400	5800	1600	23200	75	0.28	*
2TW-05-08	5/16	8.20	13.0	15.1	350	5076	1400	20300	85	0.34	*
2TW-06-10	3/8	9.80	15.0	17.0	330	4785	1320	19140	90	0.42	*
2TW-08-13	1/2	13.20	18.4	20.5	280	3990	1100	15950	130	0.54	*
2TW-10-16	5/8	16.30	22.0	24.2	250	3625	1000	14500	170	0.66	*
2TW-12-19	3/4	19.50	26.0	28.2	220	3120	860	12470	200	0.85	*
2TW-16-25	1	25.70	33.0	35.6	170	2390	660	9570	250	1.21	*

Impulse cycles tested up to 1,000,000 cycles.

Steam Hose



- // Inner tube: EPDM
- // Reinforcement: High tensile steel wire braid
- // Cover: EPDM
- // Temperature Range: -40°F to 302°F(-40°C to 150°C),(Max 160°C intermittent)
- // Application: For conveying saturated steam and superheated water continuously at a temperature below 150°C.

Product Number	inch in	ID mm	W.D mm	C.O.D mm	Max W.P.		Min B.P.		Min B.R. mm	Weight Kg/m	Unit Price USD/m
					Bar	Psi	Bar	Psi			
SH-08-13	1/2	13.2	18.0	20.4	17	250	170	2500	91	0.38	*
SH-12-19	3/4	19.5	25.0	27.7	17	250	170	2500	133	0.59	*
SH-16-25	1	25.7	33.3	35.8	17	250	170	2500	175	0.90	*
SH-20-32	1 1/4	32.4	39.7	42.5	17	250	170	2500	224	1.15	*
SH-24-38	1 1/2	38.9	46.0	49.0	17	250	170	2500	266	1.43	*
SH-32-51	2	51.5	59.1	62.3	17	250	170	2500	357	1.85	*
SH-40-64	2 1/2	63.0	74.0	78.0	17	250	170	2500	445	3.80	*
SH-48-76	3	76.0	85.0	90.0	17	250	170	2500	532	4.66	*

Impulse cycles tested up to 1,000,000 cycles.

ZM-1SN

ISO 1436-1-SAE 100 R1AT/R1ATS EN 853 1SN

- // Inner tube: Oil resistant synthetic rubber
- // Reinforcement: One braid of high-tensile steel wire
- // Cover: Environment resistant synthetic rubber
- // Temperature Range: -40°F to 212°F(-40°C to 100°C),(Max 125°C intermittent)



Product Number	inch in	ID mm	W.D mm	C.O.D mm	Max W.P.		Min B.P.		Min B.R. mm	Weight Kg/m	Unit Price USD/m
					Bar	Psi	Bar	Psi			
1SN-03-05	3/16	5.00	9.4	11.4	250	3630	1000	14500	90	0.14	*
1SN-04-06	1/4	6.60	11.0	12.9	225	3260	900	13040	100	0.21	*
1SN-05-08	5/16	8.20	12.7	14.6	215	3120	860	12480	115	0.24	*
1SN-06-10	3/8	9.80	14.8	17.1	180	2610	720	10440	125	0.30	*
1SN-08-13	1/2	13.20	18.0	20.4	160	2320	640	9280	180	0.38	*
1SN-10-16	5/8	16.30	21.3	23.7	130	1890	520	7560	205	0.46	*
1SN-12-19	3/4	19.50	25.0	27.7	105	1520	420	6080	240	0.59	*
1SN-16-25	1	25.70	33.3	35.8	88	1280	352	5120	300	0.90	*
1SN-20-32	1 1/4	32.40	39.7	42.5	63	910	252	3640	420	1.15	*
1SN-24-38	1 1/2	38.90	46.0	49.0	50	720	200	2880	500	1.43	*
1SN-32-51	2	51.50	59.1	62.3	40	580	160	2320	630	1.85	*
1SN-38-60	2 3/8	64.50	72.1	75.3	50	720	200	2880	650	2.35	*

Impulse cycles: 150,000 Tested up to 300,000 cycles
MSHA / smooth cover on request

ZM-2SN

ISO 1436-1-SAE 100 R2AT/R2ATS EN853 2SN

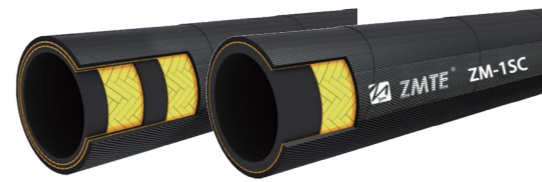
- // Inner tube: Oil resistant synthetic rubber
- // Reinforcement: Two braid of high-tensile steel wire
- // Cover: Environment resistant synthetic rubber
- // Temperature Range: -40°F to 212°F(-40°C to 100°C)
- // Application: High-pressure hydraulic oil lines used in construction, machine tool and agriculture application using petroleum or water –based hydraulic fluids.



Product Number	inch in	ID mm	W.D mm	C.O.D mm	Max W.P.		Min B.P.		Min B.R. mm	Weight Kg/m	Unit Price USD/m
					Bar	Psi	Bar	Psi			
2SN-03-05	3/16	5.10	11.0	12.6	415	6020	1660	24080	90	0.24	*
2SN-04-06	1/4	6.60	12.7	14.6	400	5800	1600	23200	100	0.34	*
2SN-05-08	5/16	8.20	14.5	16.4	350	5075	1400	20300	115	0.40	*
2SN-06-10	3/8	9.80	16.5	18.6	330	4785	1320	19140	130	0.50	*
2SN-08-13	1/2	13.20	19.6	21.8	280	4060	1120	16240	180	0.59	*
2SN-10-16	5/8	16.30	23.0	25.2	250	3625	1000	14500	200	0.71	*
2SN-12-19	3/4	19.50	26.8	29.2	220	3190	880	12760	240	0.87	*
2SN-16-25	1	25.70	34.8	37.8	170	2465	680	9860	300	1.33	*
2SN-20-32	1 1/4	32.40	43.7	46.5	130	1885	520	7540	420	1.85	*
2SN-24-38	1 1/2	38.90	50.1	53.0	90	1305	360	5220	500	2.18	*
2SN-32-51	2	51.50	62.8	66.6	80	1160	320	4640	630	2.78	*
2SN-38-60	2 3/8	65.40	75.1	79.0	70	1015	280	4060	760	3.50	*

Impulse cycles: 200,000 Tested up to 400,000 cycles
MSHA / smooth cover on request

ZM-SC



ISO 11237 SC EN857 SC

- // Inner tube: Oil resistant synthetic rubber
- // Reinforcement: One or two braid of high-tensile steel wire
- // Cover: Environment resistant synthetic rubber
- // Temperature Range: -40°F to 212°F(-40°C to 100°C)
- // Application: High pressure service with tight bends for petroleum and water-based hydraulic fluids. Excellent impulse performance and flexibility exceeding SAE 100R1/SAE 100R2 and SAE 100R16 standards.

Product Number	inch in	ID mm	W.D mm	C.O.D mm	Max W.P.		Min B.P.		Min B.R. mm	Weight Kg/m	Unit Price USD/m
					Bar	Psi	Bar	Psi			
1SC											
1SC-04-06	1/4	6.60	10.0	12.5	225	3260	900	13050	75	0.18	*
1SC-05-08	5/16	8.20	11.7	13.8	215	3120	860	12470	85	0.20	*
1SC-06-10	3/8	9.80	13.6	16.2	180	2610	720	10440	90	0.28	*
1SC-08-13	1/2	13.20	17.0	19.4	160	2320	640	9280	130	0.35	*
1SC-10-16	5/8	16.30	20.4	22.6	130	1885	520	7540	150	0.43	*
1SC-12-19	3/4	19.50	23.8	26.2	105	1520	420	6090	180	0.52	*
1SC-16-25	1	25.70	31.2	33.6	88	1280	352	5100	230	0.84	*
2SC											
2SC-04-06	1/4	6.60	11.2	13.2	400	5800	1600	23200	75	0.28	*
2SC-05-08	5/16	8.20	13.0	15.1	350	5076	1400	20300	85	0.34	*
2SC-06-10	3/8	9.80	15.0	17.0	330	4785	1320	19140	90	0.42	*
2SC-08-13	1/2	13.20	18.4	20.5	275	3990	1100	15950	130	0.54	*
2SC-10-16	5/8	16.30	22.0	24.2	250	3625	1000	14500	170	0.66	*
2SC-12-19	3/4	19.50	26.0	28.2	215	3120	860	12470	200	0.85	*
2SC-16-25	1	25.70	33.0	35.6	165	2390	660	9570	250	1.21	*

ZM-R16



ISO 11237-1 R16 SAE 100 R16

- // Inner tube: Oil resistant synthetic rubber
- // Reinforcement: Two braid of high-tensile steel wire
- // Cover: Environment resistant synthetic rubber
- // Temperature Range: -40°F to 212°F(-40°C to 100°C)

Product Number	inch in	ID mm	W.D mm	C.O.D mm	Max W.P.		Min B.P.		Min B.R. mm	Weight Kg/m	Unit Price USD/m
					Bar	Psi	Bar	Psi			
R16-04-06	1/4	6.60	11.2	13.2	400	5800	1600	23200	75	0.28	*
R16-05-08	5/16	8.20	13.0	15.1	350	5076	1400	20300	85	0.34	*
R16-06-10	3/8	9.80	15.0	17.0	330	4785	1320	19140	90	0.42	*
R16-08-13	1/2	13.20	18.4	20.5	275	3990	1100	15950	130	0.54	*
R16-10-16	5/8	16.30	22.0	24.2	250	3625	1000	14500	170	0.66	*
R16-12-19	3/4	19.50	26.0	28.2	215	3120	860	12470	200	0.85	*
R16-16-25	1	25.70	33.0	35.6	165	2390	660	9570	250	1.21	*

ZM-R17



ISO 11237 R17 SAE J517 R17

- // Inner tube: Oil resistant synthetic rubber
- // Reinforcement: One braid of high-tensile steel wire(sizes 1/4,3/8 and 1/2)and two braids of high-tensile steel wire(sizes 5/8,3/4 and 1)
- // Cover: Environment resistant synthetic rubber
- // Temperature Range: -40°F to 212°F(-40°C to 100°C)
- // Application: High pressure hydraulic applications and to replace 100R1 where higher pressures and a more flexible hose is required.

Product Number	inch in	ID mm	W.D mm	C.O.D mm	Max W.P.		Min B.P.		Min B.R. mm	Weight Kg/m	Unit Price USD/m
					Bar	Psi	Bar	Psi			
R17-03-05	3/16	5.00	9.4	11.1	210	3045	840	12180	45	0.15	*
R17-04-06	1/4	6.60	10.0	12.5	210	3045	840	12180	50	0.18	*
R17-05-08	5/16	8.20	11.7	13.8	210	3045	840	12180	55	0.20	*
R17-06-10	3/8	9.80	13.6	16.2	210	3045	840	12180	65	0.28	*
R17-08-13	1/2	13.20	17.0	19.4	210	3045	840	12180	90	0.35	*
R17-10-16	5/8	16.30	22.0	24.2	210	3045	840	12180	100	0.66	*
R17-12-19	3/4	19.50	26.0	28.2	210	3045	840	12180	120	0.85	*
R17-16-25	1	25.70	33.0	35.6	210	3045	840	12180	150	1.21	*

ZM-2ST

MT98 2ST/R2A

- // Inner tube: Oil resistant synthetic rubber
- // Reinforcement: two braid of high-tensile steel wire
- // Cover: Environment resistant synthetic rubber
- // Temperature Range: -40°F to 212°F (-40°C to 100°C)
- // Application: High-pressure hydraulic oil lines used in construction, machine tool and agriculture application using petroleum or water –based hydraulic fluids.



Product Number	inch in	ID mm	W.D mm	C.O.D mm	Max W.P.		Min B.P.		Min B.R. mm	Weight Kg/m	Unit Price USD/m
					Bar	Psi	Bar	Psi			
2ST-03-05	1/4	6.60	12.7	17.1	350.0	5076.0	1400.0	20300.0	100.0	0.36	*
2ST-04-06	5/16	8.20	14.5	18.6	320.0	4640.0	1280.0	18560.0	115.0	0.49	*
2ST-06-10	3/8	9.80	16.5	21.2	280.0	4061.0	1120.0	16240.0	130.0	0.61	*
2ST-08-13	1/2	13.20	19.6	24.4	250.0	3626.0	1000.0	14500.0	180.0	0.75	*
2ST-10-16	5/8	16.30	23.0	27.6	200.0	2900.0	800.0	11600.0	205.0	0.87	*
2ST-12-19	3/4	19.50	26.8	31.6	160.0	2320.0	640.0	9280.0	240.0	1.09	*
2ST-16-25	1	25.70	34.8	39.1	140.0	2030.0	560.0	8120.0	300.0	1.58	*
2ST-20-32	1 1/4	32.40	43.7	50.3	110.0	1595.0	440.0	6380.0	420.0	2.58	*
2ST-24-38	1 1/2	38.90	50.1	56.2	90.0	1305.0	360.0	5220.0	500.0	2.78	*
2ST-32-51	2	51.50	62.8	69.0	80.0	1160.0	320.0	4640.0	630.0	3.42	*

Impulse cycles: 200,000 Tested up to 400,000 cycles
MSHA / smooth cover on request

ZM-3SN

EN853 3SN

- // Construction: This hose consists of an inner tube of oil synthetic rubber; Three wires braid reinforcements, and an oil and weather resistant synthetic rubber cover.
- // Application: Hose range suitable to carry hydraulic fluids such as glycol, mineral oils, fuels, lubricants, emulsion, hydrocarbons etc.
- // Working Temperature: -40°F to 212°F (-40°C to 100°C)
- // Executive Standard: Q/ZMB03-2006 Type 3



Product Number	inch in	Hose ID mm	W.D mm	C.O.D mm	Max W.P.		Min B.P.		Min B.R. mm	Weight Kg/m	Unit Price USD/m
					Bar	Psi	Bar	Psi			
3SN-06-10	3/8	9.8	16.8	12.5	500	7250	1500	21750	120	0.68	*
3SN-08-13	1/2	13.2	20.6	15.5	470	6815	1410	20445	160	0.80	*
3SN-10-16	5/8	16.3	24.0	18.8	410	5945	1230	17835	210	0.94	*
3SN-12-19	3/4	19.5	28.0	22.9	375	5438	1125	16314	280	1.16	*
3SN-16-25	1	25.7	35.8	29.8	330	4785	990	14355	310	1.55	*
3SN-20-32	1 1/4	32.4	43.3	37.3	240	3480	720	10440	410	1.83	*

ZM-4SP

ISO 3862-1 4SP SAE 100 R10 EN 856 4SP

- // Tube: Oil resistant synthetic rubber
- // Reinforcement: Four alternating layers of spiraled high-tensile Steel wire
- // Cover: Abrasion and ozone resistant synthetic rubber
- // Temperature Range: -40°F to 212°F (-40°C to 100°C)
- // Application: Very high pressure applications used for petroleum-based hydraulic fluids.



Product Number	inch in	ID mm	W.D mm	OD mm	Max W.P.		Min B.P.		Min B.R. mm	Weight Kg/m	Unit Price USD/m
					Bar	Psi	Bar	Psi			
4SP-04-06	1/4	6.6	14.5	17.2	450	6527	1800	26106	150	0.61	*
4SP-06-10	3/8	9.80	17.8	19.9	445	6454	1780	25816	180	0.76	*
4SP-08-13	1/2	13.10	20.8	22.8	415	6019	1660	24076	230	0.88	*
4SP-10-16	5/8	16.10	24.0	26.4	350	5076	1400	20305	250	1.10	*
4SP-12-19	3/4	19.30	28.2	30.6	350	5076	1400	20305	300	1.47	*
4SP-16-25	1	25.60	34.8	37.7	280	4061	1120	16244	340	1.98	*
4SP-20-32	1 1/4	32.10	45.3	48.6	210	3045	840	12183	460	2.55	*
4SP-24-38	1 1/2	38.30	51.7	55.0	185	2683	740	10733	560	3.26	*
4SP-32-51	2	51.30	64.6	68.1	165	2393	660	9572	660	4.92	*

ZM-4SH

ISO 3862-1 4SH EN 856 4SH

- // Tube: Oil resistant synthetic rubber
- // Reinforcement: Four alternating layers of spiraled high-tensile Steel wire
- // Cover: Abrasion and ozone resistant synthetic rubber
- // Temperature Range: -40°F to 212°F (-40°C to 100°C)



Product Number	inch in	ID mm	W.D mm	OD mm	Max W.P.		Min B.P.		Min B.R. mm	Weight Kg/m	Unit Price USD/m
					Bar	Psi	Bar	Psi			
4SH-12-19	3/4	19.30	28.2	30.8	420	6092	1680	24366	280	1.62	*
4SH-16-25	1	25.60	34.9	37.9	380	5511	1520	22045	340	2.12	*
4SH-20-32	1 1/4	32.10	42.0	44.5	325	4714	1300	18855	455	2.55	*
4SH-24-38	1 1/2	38.30	48.6	52.6	290	4206	1160	16824	560	3.26	*
4SH-32-51	2	51.30	62.6	67.0	250	3626	1000	14504	710	4.92	*

MSHA Cover on request

ZM-R12

ISO 3862-1 R12 SAE 100 R12 EN 856 R12

- // Inner tube: Oil resistant sythetic rubber
- // Reinforcement: Four alternating layers of spiraled high-tensile Steel wire
- // Cover: Environment resistant synthetic rubber
- // Temperature Range: -40°F to 250°F (-4°C to 121°C)
- // Application: Very high pressure applications used for petroleum-based hydraulic fluids.



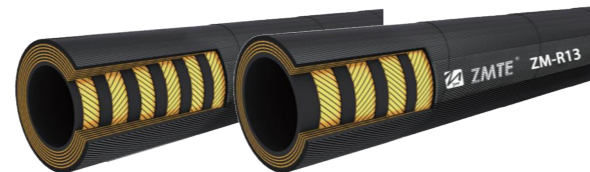
Product Number	inch in	ID mm	W.D mm	OD mm	Max W.P.		Min B.P.		Min B.R. mm	Weight Kg/m	Unit Price USD/m
					Bar	Psi	Bar	Psi			
R12-06-10	3/8	9.80	17.2	19.6	280	4061	1120	16240	130	0.59	*
R12-08-13	1/2	13.10	20.6	23.1	280	4061	1120	16240	180	0.77	*
R12-10-16	5/8	16.10	24.0	27.0	280	4061	1120	16240	200	1.04	*
R12-12-19	3/4	19.30	27.9	30.1	280	4061	1120	16240	240	1.20	*
R12-16-25	1	25.60	34.8	37.3	280	4061	1120	16240	300	1.79	*
R12-20-32	1 1/4	32.10	43.0	45.7	210	3045	840	12180	420	2.53	*
R12-24-38	1 1/2	38.30	49.5	52.2	175	2538	700	10150	500	3.05	*
R12-32-51	2	51.30	62.8	65.4	175	2538	700	10150	630	4.19	*

MSHA Cover on request

ZM-R13

ISO 3862-1 R13 SAE 100 R13 EN 856 R13

- // Inner tube: Oil resistant synthetic rubber
- // Reinforcement: Four alternating layers of spiraled high-tensile steel wire (sizes 3/4" and 1") and six alternating layers of spiraled high tensile steel wire (sizes 11/4", 11/2" and 2").
- // Cover: Environment resistant synthetic rubber
- // Temperature Range: -40°F to 250°F (-40°C to 121°C)
- // Application: Very high pressure applications subject to surge or flexing such as construction equipment, mining and the high-performance industrial market.



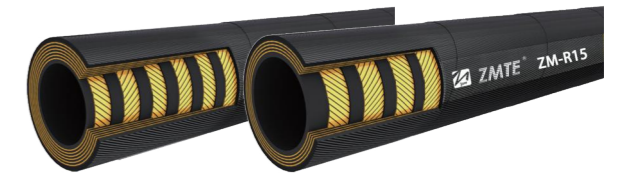
Product Number	inch in	ID mm	W.D mm	OD mm	Max W.P.		Min B.P.		Min B.R. mm	Weight Kg/m	Unit Price USD/m
					Bar	Psi	Bar	Psi			
R13-12-19	3/4	19.30	28.2	31.0	350	5076	1400	20300	240	1.62	*
R13-16-25	1	25.60	34.9	37.9	350	5076	1400	20300	300	2.62	*
R13-20-32	1 1/4	32.10	45.9	49.1	350	5076	1400	20300	420	3.62	*
R13-24-38	1 1/2	38.30	54.0	56.9	350	5076	1400	20300	500	4.62	*
R13-32-51	2	51.30	67.5	70.9	350	5076	1400	20300	630	5.62	*

MSHA Cover on request

ZM-R15

ISO 3862-1 R15 SAE 100 R15 EN 856 R15

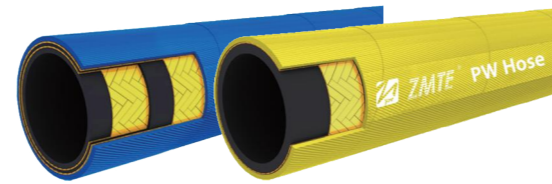
- // Inner tube: Oil resistant synthetic rubber
- // Reinforcement: Four alternating layers of spiral high-tensile steel wire (sizes 1/2, 5/8, 3/4 and 1) and six alternating layers of spiral high tensile steel wire (sizes 1 1/4, 1 1/2).
- // Cover: Environment resistant synthetic rubber
- // Temperature Range: -40°F to 250°F (-40°C to 121°C)
- // Application: Design specifically to handle severe high pressure applications where pressure or constant hydrostatic loads are present



Product Number	inch in	ID mm	W.D mm	C.O.D mm	Max W.P.		Min B.P.		Min B.R. mm	Weight Kg/m	Unit Price USD/m
					Bar	Psi	Bar	Psi			
R15-06-10	3/8	9.80	17.8	19.9	420	6090	1680	24360	150	0.76	*
R15-08-13	1/2	13.10	20.8	22.8	420	6090	1680	24360	200	0.88	*
R15-12-19	3/4	19.30	28.2	30.8	420	6090	1680	24360	265	1.62	*
R15-16-25	1	25.60	34.9	37.9	420	6090	1680	24360	330	2.18	*
R15-20-32	1-1/4	32.10	47.6	50.2	420	6090	1680	24360	445	3.58	*
R15-24-38	1-1/2	38.30	54.0	56.8	420	6090	1680	24360	530	4.50	*

MSHA Cover on request

PW HOSE



- // Inner tube: synthetic rubber
- // Reinforcement: 1W/B,2W/B(One and Two braids of high tensile steel wire)
- // Cover: Weather and abrasion resistant synthetic rubber
- // Temperature Range: -40°F to 212°F(-40°C to 100°C)

Product Number	inch in	ID mm	W.D mm	C.O.D mm	Max W.P.		Min B.P.		Min B.R. mm	Weight Kg/m	Unit Price USD/m
					Bar	Psi	Bar	Psi			
1PW											
1PW-04-06	1/4	6.60	10.0	12.5	275	4000	825	12000	90	0.18	*
1PW-05-08	5/16	8.20	11.7	13.8	275	4000	825	12000	100	0.2	*
1PW-06-10	3/8	9.80	13.6	16.2	275	4000	825	12000	110	0.28	*
1PW-08-13	1/2	13.20	17.0	19.4	205	3000	615	9000	150	0.35	*
2PW											
2PW-04-06	1/4	6.60	11.2	13.2	415	6000	1245	18000	95	0.28	*
2PW-05-08	5/16	8.20	13.0	15.1	415	6000	1245	18000	105	0.34	*
2PW-06-10	3/8	9.80	15.0	17.0	415	6000	1245	18000	115	0.42	*
2PW-08-13	1/2	13.20	18.4	20.5	345	5000	1035	15000	165	0.54	*

Water Blasting Hose



- // Application: Ultra high pressure hose for water descaling system
- // Inner tube: Black synthetic rubber
- // Reinforcement: Four and Six wire of high tensile spiraled steel wire
- // Cover: Weather and abrasion resistant synthetic rubber
- // Temperature Range: -40°F to 212°F(-40°C to 100°C)

Product Number	inch in	ID mm	C.O.D mm	Max W.P.		Min B.P.		Min B.R. mm	Weight Kg/m	Unit Price USD/m
				Bar	Psi	Bar	Psi			
4 wires										
4WB-06-10	3/8	9.80	20.3	700	10000	1750	25000	190	0.80	*
4WB-08-13	1/2	13.20	23.2	700	10000	1750	25000	240	0.98	*
4WB-12-19	3/4	19.50	31.4	700	10000	1750	25000	300	1.68	*
6 wires										
6WB-06-10	3/8	9.80	21.3	1250	18000	3125	45000	240	0.96	*
6WB-08-13	1/2	13.20	25.6	1110	16000	2750	40000	250	1.28	*
6WB-12-19	3/4	19.50	32.8	1000	14500	2500	36250	260	1.89	*

Sewer Jetting Hose



- // Inner tube: Polyethylene
- // Reinforcement: one or two wires of high tensile fiber
- // Cover: Polyvinyl chloride & Polyurethane
- // Application: Particularly suitable for use with compact vehicles and lateral sewer line cleaning equipment. Ideal for use in small pipes and ducts. Ideal for use in small pipes and ducts.
- // Temperature Range: -20°C to 100°C

Product Number	inch in	ID mm	C.O.D mm	Max W.P.		Min B.P.		Min B.R. mm	Weight Kg/m	Unit Price USD/m
				Bar	Psi	Bar	Psi			
Green										
SJ-02-03	1/8	3.20	7.8	275	4000	688	10000	40	0.10	*
SJ-03-05	3/16	4.80	10.3	275	4000	688	10000	40	0.13	*
SJ-04-06	1/4	6.40	12.5	275	4000	688	10000	40	0.13	*
SJ-06-10	3/8	9.50	18.5	275	4000	688	10000	60	0.16	*
SJ-08-13	1/2	12.80	20.5	275	4000	688	10000	100	0.27	*
SJ-10-16	5/8	15.90	26.3	275	4000	688	10000	115	0.36	*
Red										
SJ-03-05	3/16	4.80	10.5	345	5000	862	12500	40	0.14	*
SJ-04-06	1/4	6.40	12.6	345	5000	862	12500	40	0.14	*
SJ-06-10	3/8	9.50	18.7	345	5000	862	12500	60	0.17	*
SJ-08-13	1/2	12.80	20.8	345	5000	862	12500	100	0.29	*

ZM-1TE



- // Inner tube: Oil resistant synthetic rubber
- // Reinforcement: One textile braids
- // Cover: Black oil resistant synthetic rubber
- // Temperature Range: -40°F to 212°F (-40°C to 100°C)

Size code	Nominal ID		OD mm	WP		BP		Min bend mm	Weight kgs/m	Unit Price USD/m
	DN	In		Bar	Psi	Bar	Psi			
1TE-03-05	4.8	3/16	10.6	35.0	508	140	2031	35	0.09	*
1TE-04-06	6.6	1/4	12.2	30.0	435	120	1740	45	0.11	*
1TE-05-08	8.2	5/16	13.8	30.0	435	120	1740	65	0.13	*
1TE-06-10	9.9	3/8	15.4	30.0	435	120	1740	75	0.15	*
1TE-08-13	13.2	1/2	19.3	30.0	435	120	1740	90	0.22	*
1TE-10-16	16.3	5/8	22.5	26.0	377	104	1508	115	0.27	*
1TE-12-19	19.5	3/4	26.2	22.0	319	88	1276	150	0.34	*
1TE-16-25	25.8	1	33.1	20.0	290	80	1160	205	0.48	*

ZM-3TE



- // Inner tube: Oil resistant synthetic rubber
- // Reinforcement: Two textile braids
- // Cover: Black oil resistant synthetic rubber
- // Temperature Range: -40°F to 212°F (-40°C to 100°C)

Size code	Nominal ID		OD mm	WP		BP		Min bend mm	Weight kgs/m	Unit Price USD/m
	DN	In		Bar	Psi	Bar	Psi			
3TE-03-05	4.8	3/16	12.4	160	2321	640	9282	40	0.15	*
3TE-04-06	6.6	1/4	14.2	145	2103	580	8412	45	0.19	*
3TE-05-08	8.2	5/16	16.4	130	1885	520	7542	55	0.24	*
3TE-06-10	9.9	3/8	17.8	110	1595	440	6382	70	0.26	*
3TE-08-13	13.2	1/2	21.2	93	1349	372	5395	85	0.32	*
3TE-10-16	16.3	5/8	25.2	80	1160	320	4641	105	0.43	*
3TE-12-19	19.5	3/4	28.6	70	1015	280	4061	130	0.52	*
3TE-16-25	25.8	1	35.3	55	798	220	3191	150	0.68	*
3TE-20-32	31.5	1-1/4	42.3	45	653	180	2611	190	0.80	*
3TE-24-38	38.0	1-1/2	49.4	40	580	160	2321	240	1.04	*
3TE-32-51	51.0	2	62.6	33	479	132	1914	300	1.39	*

ZM-2TE



- // Inner tube: Oil resistant synthetic rubber
- // Reinforcement: One textile braids
- // Cover: Black oil resistant synthetic rubber
- // Temperature Range: -40°F to 212°F (-40°C to 100°C)

Size code	Nominal ID		OD mm	WP		BP		Min bend mm	Weight kgs/m	Unit Price USD/m
	DN	In		Bar	Psi	Bar	Psi			
2TE-03-05	4.8	3/16	11.4	80.0	1160	320	4641	25	0.12	*
2TE-04-06	6.6	1/4	13.1	75.0	1088	300	4351	40	0.14	*
2TE-05-08	8.2	5/16	14.8	68.0	986	272	3945	50	0.17	*
2TE-06-10	9.9	3/8	16.4	63.0	914	252	3655	60	0.19	*
2TE-08-13	13.2	1/2	19.7	58.0	841	232	3365	70	0.25	*
2TE-10-16	16.3	5/8	23.6	50.0	725	200	2901	90	0.33	*
2TE-12-19	19.5	3/4	27	45.0	653	180	2611	110	0.41	*
2TE-16-25	25.8	1	34	40.0	580	160	2321	150	0.58	*
2TE-12-19	19.5	1-1/4	41	35.0	508	140	2031	170	0.71	*

ZM-R3



- // Inner tube: Oil resistant synthetic rubber
- // Reinforcement: Two textile braids
- // Cover: Black oil&abrasion resistant synthetic rubber
- // Temperature Range: -40°F to 275°F (-40°C to 135°C)

Size code	Nominal ID		OD mm	WP		BP		Min bend mm	Weight kgs/m	Unit Price USD/m
	DN	In		Bar	Psi	Bar	Psi			
R3-03-05	4.8	3/16	12.5	103	1494	207	5976	70	0.14	*
R3-04-06	6.3	1/4	14.5	86	1247	172	4988	76	0.18	*
R3-05-08	8.0	5/16	17	83	1204	165	4816	102	0.25	*
R3-06-10	9.5	3/8	18	78	1131	155	4524	102	0.27	*
R3-08-13	12.7	1/2	21.8	69	1000	137	4000	127	0.39	*
R3-10-16	16.0	5/8	26	60	870	121	3480	140	0.55	*
R3-12-19	19.0	3/4	29	52	754	103	3016	152	0.67	*
R3-16-25	25.4	1	36	39	566	78	2264	203	0.81	*
R3-20-32	32.0	1-1/4	44.0	26	377	52	1508	254	0.92	*

ZM-R5



- // Inner tube: Black synthetic rubber
- // Reinforcement: Two textile braids
- // Cover: Oil&weather resistant rubber impregnated fabric braid
- // Temperature Range: -40°F to 212°F (-40°C to 100°C)

Size code	Nominal ID		OD mm	WP		BP		Min bend mm	Weight kgs/m	Unit Price USD/m
	DN	In		Bar	Psi	Bar	Psi			
R5-03-05	4.8	3/16	13.0	207	3002	827	11992	76	0.21	*
R5-04-06	6.3	1/4	14.6	207	3002	827	11992	86	0.27	*
R5-05-08	8.0	5/16	17.0	155	2248	621	9005	102	0.34	*
R5-06-10	10.5	13/32	19.5	138	2001	552	8004	117	0.39	*
R5-08-13	12.7	1/2	23.2	121	1746	483	6984	140	0.53	*
R5-10-16	16.0	5/8	27.2	103	1494	414	5976	165	0.65	*
R5-14-22	22.0	7/8	31.0	55	798	221	3192	183	0.86	*
R5-18-28	28.0	1-1/8	38.0	43	624	172	2496	229	0.91	*
R5-22-35	35.0	1-3/8	44.5	34	493	138	1972	267	1.00	*
R5-29-46	46.0	1-13/16	56.4	24	348	97	1392	337	1.48	*

ZM-R4



- // Inner tube: Black synthetic rubber
- // Reinforcement: Two textile braids with body spiral wire
- // Cover: Black oil&abrasion resistant synthetic rubber
- // Temperature Range: -40°F to 275°F (-40°C to 135°C)

Size code	Nominal ID		OD mm	WP		BP		Min bend mm	Weight kgs/m	Unit Price USD/m
	DN	In		Bar	Psi	Bar	Psi			
R4-12-19	19.0	3/4	29.2	21	305	84	1218	95	0.95	*
R4-16-25	25.4	1	36.8	17	247	70	1015	125	1.16	*
R4-20-32	31.8	1-1/4	44.2	14	203	56	812	160	1.61	*
R4-24-38	38.1	1-1/2	50.8	11	160	44	638	200	1.85	*
R4-28-45	45.0	1-3/4	58.4	10	145	40	580	240	2.12	*
R4-32-51	50.8	2	63.2	7	102	28	406	255	2.36	*
R4-40-63	63.5	2-1/2	78.4	4	58	17	247	315	3.03	*
R4-48-76	76.2	3	90.8	4	58	17	247	380	3.85	*
R4-56-89	89.0	3-1/2	106.2	3	44	12	174	400	4.60	*
R4-64-102	102.0	4	119.2	3	44	12	174	510	5.21	*

ZM-R6



- // Inner tube: Oil resistant synthetic rubber
- // Reinforcement: One textile braids
- // Cover: Black oil&abrasion resistant synthetic rubber
- // Temperature Range: -40°F to 275°F (-40°C to 135°C)

Size code	Nominal ID		OD mm	WP		BP		Min bend mm	Weight kgs/m	Unit Price USD/m
	DN	In		Bar	Psi	Bar	Psi			
R6-03-05	4.8	3/16	11.1	34	493	110	1595	51	0.10	*
R6-04-06	6.4	1/4	12.7	28	406	110	1595	64	0.13	*
R6-05-08	8.0	5/16	14.3	28	406	110	1595	76	0.15	*
R6-06-10	9.5	3/8	16.2	28	406	110	1595	76	0.18	*
R6-08-13	12.7	1/2	19.8	28	406	110	1595	102	0.26	*
R6-10-16	16.0	5/8	23.0	24	348	100	1450	125	0.31	*
R6-12-19	19.0	3/4	26.6	17	247	85	1233	140	0.47	*
R6-16-25	25.4	1	33.8	17	247	85	1233	150	0.71	*

Air Hose



// Application: For transmission of oxygen and ethyne gas.

// Inner tube: Black NR&SBR synthetic rubber

// Reinforcement: High tenacity fiber

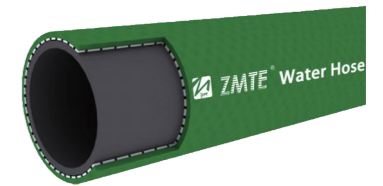
// Cover: Synthetic tubber with Red/Blue/Green color.

EPDM synthetic tubber can also be used as the inner layer or outer cover.

// Temperature Range: -20°C to 45°C /EPDM hose: -20°C to 120°C

Size code	Nominal ID		OD mm	WP		BP		Weight kgs/m	Unit Price USD/m
	DN	In		Bar	Psi	Bar	Psi		
AH-04-06	6.0	1/4	11.5	20	300	60	900	0.17	*
AH-05-08	8.0	5/16	15	20	300	60	900	0.22	*
AH-06-10	10.0	3/8	17	20	300	60	900	0.26	*
AH-08-13	13.0	1/2	21	20	300	60	900	0.40	*
AH-10-16	16.0	5/8	24.0	20	300	60	900	0.47	*
AH-12-19	19.0	3/4	29	20	300	60	900	0.60	*
AH-16-25	25.0	1	35.5	20	300	60	900	0.78	*
AH-20-32	32.0	1-1/4	43	20	300	60	900	1.26	*
AH-24-38	38.0	1-1/2	50.0	20	300	60	900	1.42	*
AH-32-51	51.0	2	63	20	300	60	900	1.80	*

Water Hose



// Application: For transmission of water.

// Inner tube: Black synthetic rubber

// Reinforcement: High tenacity fiber

// Cover: NR&SBR synthetic rubber Red/Blue/Green etc.

// Temperature Range: -20°C to 45°C /EPDM hose: -20°C to 120°C

Size code	Nominal ID		OD mm	WP		BP		Weight kgs/m	Unit Price USD/m
	DN	In		Bar	Psi	Bar	Psi		
WH-04-06	6.0	1/4	11.5	20	300	60	900	0.17	*
WH-05-08	8.0	5/16	15	20	300	60	900	0.22	*
WH-06-10	10.0	3/8	17	20	300	60	900	0.26	*
WH-08-13	13.0	1/2	21	20	300	60	900	0.40	*
WH-10-16	16.0	5/8	24.0	20	300	60	900	0.47	*
WH-12-19	19.0	3/4	29	20	300	60	900	0.60	*
WH-16-25	25.0	1	35.5	20	300	60	900	0.78	*
WH-20-32	32.0	1-1/4	43	20	300	60	900	1.26	*
WH-24-38	38.0	1-1/2	50.0	20	300	60	900	1.42	*
WH-32-51	51.0	2	63	20	300	60	900	1.80	*

Fuel&Oil Hose



- // Inner tube: Black NR&SBR synthetic rubber
- // Reinforcement: High tenacity fiber
- // Cover: NR&SBR synthetic rubber Red/Blue/Green etc.
- // Temperature Range: -4°F to 250°F (-20°C to 120°C)
- // Application: For transmission of mineral oil such as diesel, gasoline, machine oil and lubricant, etc. It can be used to manufacture static conducting rubber hose.

Size code	Nominal ID		OD mm	WP		BP		Weight kgs/m	Unit Price USD/m
	DN	In		Bar	Psi	Bar	Psi		
FO-04-06	6.0	1/4	12.5	20	300	60	900	0.16	*
FO-05-08	8.0	5/16	15.3	20	300	60	900	0.21	*
FO-06-10	10.0	3/8	16.8	20	300	60	900	0.25	*
FO-08-13	13.0	1/2	20.5	20	300	60	900	0.35	*
FO-10-16	16.0	5/8	24.0	20	300	60	900	0.57	*
FO-12-19	19.0	3/4	28	20	300	60	900	0.65	*
FO-16-25	25.0	1	35.5	20	300	60	900	0.82	*
FO-20-32	32.0	1-1/4	43	20	300	60	900	1.26	*
FO-24-38	38.0	1-1/2	50.0	20	300	60	900	1.42	*
FO-32-51	51.0	2	63	20	300	60	900	1.80	*

Chemical Hose



- // Inner tube: UHMW PE
- // Reinforcement: High tensile textile with helix steel wire
- // Cover: EPDM synthetic rubber
- // Temperature Range: -40°F to 250°F (-40°C to 120°C)
- // Application: Multifunctional chemical hose designed to handle 98% of all chemicals, solvents and corrosive liquids in both pressure and suction service.

Size code	Nominal ID		OD mm	WP		BP		Weight kgs/m	Unit Price USD/m
	DN	In		Bar	Psi	Bar	Psi		
CH-12-19	19.0	3/4	29	20	300	60	900	0.53	*
CH-16-25	25.0	1	37	20	300	60	900	0.72	*
CH-20-32	32.0	1-1/4	45.8	20	300	60	900	1.19	*
CH-24-38	38.0	1-1/2	52.6	20	300	60	900	1.43	*
CH-32-51	51.0	2	67.2	20	300	60	900	2.13	*
CH-40-64	64.0	2-1/2	81.4	20	300	60	900	2.72	*
CH-48-76	76.0	3	94.6	20	300	60	900	3.49	*
CH-64-102	102.0	4	120.6	20	300	60	900	4.55	*

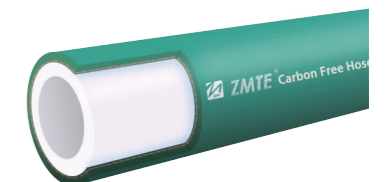
Multipurpose Hose



- // Inner tube: Plasticized PVC
- // Reinforcement: Single braid of Synthetic fiber
- // Cover: Abrasion Resistant Thermo-compound
- // Application: Specially designed for spraying various pesticides, high pressure watering and aerating etc.
- // Temperature Range: 14°F to 140°F (-10°C to 60°C)

Size code	Nominal ID		OD mm	WP		BP		Min bend mm	Weight kgs/m	Unit Price USD/m
	DN	In		Bar	Psi	Bar	Psi			
MH-03-05	4.8	3/16	12.5	10-20	300	60	870	50	0.16	*
MH-04-06	6.0	1/4	12.5	10-20	300	60	870	50	0.16	*
MH-05-08	8.0	5/16	15.3	10-20	300	60	870	64	0.21	*
MH-06-10	10.0	3/8	16.8	10-20	300	60	870	90	0.25	*
MH-08-13	13.0	1/2	20.5	10-20	300	60	870	120	0.35	*
MH-10-16	16.0	5/8	24.5	10-20	300	60	870	150	0.45	*
MH-12-19	19.0	3/4	28.5	10-20	300	60	870	170	0.60	*
MH-16-25	25.0	1	35.5	10-20	300	60	870	250	0.79	*

Carbon Free Hose



- // Inner tube: Synthetic rubber
- // Reinforcement: High tenacity fiber
- // Cover: Black oil resistant synthetic rubber
- // Application: Electrical Coolant application; Conveying coolants in Furnace, specially designed for Low Leakage Current
- // Temperature Range: -40°F to 212°F (-40°C to 100°C)

Size code	Nominal ID		OD mm	WP		BP		Min bend mm	Weight kgs/m	Unit Price USD/m
	DN	In		Bar	Psi	Bar	Psi			
WT-12-19	19.5	3/4	31.6	17	247	68	988	65	0.66	*
WT-24-38	39.4	1-1/2	52.8	17	247	68	988	105	1.32	*
WT-32-51	51.5	2	66.2	13	200	52	800	155	1.88	*
WT-40-64	64.5	2-1/2	81.3	13	200	52	800	255	2.65	*

LNG CNG HOSE

- // Inner tube: PTFE
- // Reinforcement: One wire textile and Two braid of high-tensile steel wire
- // Cover: Polyurethane
- // Temperature Range: -40°F to 212°F (-40°C to 100°C)
- // Application: Recommended for LNG/CNG applications

Product Number	inch in	ID mm	C.O.D mm	Max W.P.		Min B.R. mm	Unit Price USD/m
				Bar	Psi		
LC-05-08	5/16	8.0	17.5	30	435	90	*
LC-06-10	3/8	9.5	19	30	435	100	*
LC-08-13	1/2	12.7	25	30	435	150	*
LC-12-20	3/4	19.1	32	30	435	250	*
LC-16-25	1	25.4	38	30	435	300	*

ZM-R7

- // Inner tube: Nylon
- // Reinforcement: Two layers sythetic fiber
- // Cover: Urethane
- // Temperature Range: -40°F to 212°F (-40°C to 100°C)



Size code	Normal ID		OD mm	WP		BP		Min bend mm	Weight kgs/m	Unit Price USD/m
	DN	In		Bar	Psi	Bar	Psi			
R7-02-03	3.3	1/8	8.5	172	2494	689	9976	13	0.09	*
R7-03-05	4.8	3/16	10.8	207	3002	827	12008	22	0.11	*
R7-04-06	6.4	1/4	13	207	3002	827	12008	33	0.15	*
R7-05-08	7.9	5/16	14	172	2494	689	9976	46	0.18	*
R7-06-10	9.5	3/8	15	155	2248	621	8992	51	0.25	*
R7-08-13	12.7	1/2	21	138	2001	552	8004	76	0.32	*
R7-12-19	19.0	3/4	26	86	1247	345	4988	127	0.39	*
R7-16-25	25.4	1	32	69	1000	276	4000	203	0.50	*

ZM-R8

- // Inner tube: Nylon
- // Reinforcement: Sythetic fiber
- // Cover: Urethane
- // Temperature Range : -40°F to 212°F (-40°C to 100°C)



Size code	Normal ID		OD mm	WP		BP		Min bend mm	Weight kgs/m	Unit Price USD/m
	DN	In		Bar	Psi	Bar	Psi			
R8-03-05	4.8	3/16	13.1	345	5003	1379	19996	88	0.110	*
R8-04-06	6.4	1/4	15.9	345	5003	1379	19996	51	0.170	*
R8-06-10	9.5	3/8	19.4	276	4002	1103	15994	64	0.280	*
R8-08-13	12.7	1/2	22.7	241	3495	965	13993	102	0.360	*

Paint Spray Hose



- // Inner tube: Nylon(PA)
- // Reinforcement: One or two wires of high tensile fiber
- // Cover: Abrasion and chemical resistant polyurethane cover
- // Temperature Range: 4°F to 212°F (-20°C to 100°C)

Product Number	inch in	ID mm	C.O.D mm	Max W.P.		Min B.P.		Min B.R. mm	Weight Kg/m	Unit Price USD/m
				Bar	Psi	Bar	Psi			
PS-04-06	1/4	6.6	11.5	250	3625	1000	14500	30	0.16	*
PS-06-10	3/8	9.8	17.4	250	3625	1000	14500	70	0.41	*
PS-08-13	1/2	13.2	19.5	180	2610	720	10440	80	0.58	*

ZM-R14



- // Inner Tube: Temperature chemical resistant PTFE material
- // Cover: Braided with stainless steel
- // Temperature Range: -76°F to 500°F (-60°C to 260°C)

Product Number	inch in	ID mm	C.O.D mm	Max W.P.		Min B.P.		Min B.R. mm	Weight Kg/m	Unit Price USD/m
				Bar	Psi	Bar	Psi			
R14-02-03	1/8	3.2	6.6	238	3444	950	13775	16	0.07	*
R14-03-05	3/16	4.8	7.9	207	3002	828	12006	20	0.08	*
R14-04-06	1/4	6.4	9.4	188	2719	750	10875	27	0.1	*
R14-05-08	5/16	8.0	11.1	163	2356	650	9425	27	0.14	*
R14-06-10	3/8	9.5	13.1	135	1958	540	7830	33	0.16	*
R14-08-13	1/2	12.7	16.5	113	1631	450	6525	66	0.24	*
R14-10-16	5/8	16.0	19.4	80	1160	320	4640	150	0.26	*
R14-12-19	3/4	19.0	23	70	1015	280	4060	226	0.37	*
R14-14-22	7/8	22.2	26.2	60	870	240	3480	245	0.42	*
R14-16-25	1	25.4	29.8	50	725	200	2900	300	0.53	*

Corrugated tube on request

Water Suction Hose



- // Heavy suction pipe is made by the highest quality of compound synthesis. It has the maximum flexibility with long service life and light weight. Designed for full suction and discharge pressure.
- // It handles sewage, waste water etc.
- // Hose lining: Black SBR, Styrene butadiene rubber synthetic rubber.
- // Cover rubber layer: Black SBR, Styrene butadiene rubber synthetic rubber.
- // Reinforcement layer: Multi-layer fiber layer with spiral wire strengthening.
- // Temperature Range: -20°F to 180°F (-30°C to 82°C)

Product Number	inch in	ID mm	EL ply	C.O.D mm	Working pressure		Min B.R. mm	Weight Kg/m	Length		Unit Price USD/m
					psi	kg/cm ³			ft	m	
WS-16-25	1	25.4	2	36.8	150	10	150	0.89	200	60	*
WS-20-32	1-1/4	31.8	2	44.8	150	10	200	1.04	200	60	*
WS-24-38	1-1/2	38.1	2	51.4	150	10	250	1.21	200	60	*
WS-32-51	2	50.8	2	64.4	150	10	300	1.69	200	60	*
WS-40-64	2-1/2	63.5	2	78.4	150	10	375	2.04	200	60	*
WS-48-76	3	76.2	2	90.8	150	10	500	2.8	200	60	*
WS-64-102	4	101.6	2	119.2	150	10	700	4.67	200	60	*
WS-80-127	5	127.0	4	146.2	150	10	1000	6.45	200	60	*
WS-96-152	6	152.4	4	172	150	10	1200	7.63	100	30	*
WS-128-203	8	203.2	4	226.4	150	10	1600	13.01	100	30	*
WS-160-254	10	254	6	282.6	150	10	2500	21.98	30	10	*

Oil Suction Hose



- // Characteristics: Flexible,abrasion,aging,oil,weather,ozone resistance.
- // Hose lining: NBR
- // Temperature Range: -4°F to 248°F (-20°C to 120°C)
- // Application: Handle petroleum products up to 50% aromatics on marine docks,ships and barges.

Product Number	inch in	ID mm	EL ply	C.O.D mm	Working pressure		Min B.R. mm	Weight Kg/m	Length		Unit Price USD/m
					psi	kg/cm ³			ft	m	
OS-16-25	1	25.4	2	36.8	150	10	150	0.8	200	60	*
OS-20-32	1-1/4	31.8	2	44.8	150	10	200	0.98	200	60	*
OS-24-38	1-1/2	38.1	2	51.4	150	10	250	1.16	200	60	*
OS-32-51	2	50.8	2	64.4	150	10	300	1.56	200	60	*
OS-48-76	3	76.2	2	90.8	150	10	500	2.26	200	60	*
OS-64-102	4	101.6	2	119.2	150	10	700	4.23	200	60	*
OS-80-127	5	127.0	4	146.1	150	10	1000	5.91	200	60	*
OS-96-152	6	152.4	4	172	150	10	1200	10	100	30	*

Mud suction and Discharge hose



- // Hose Lining: NR,SBR,BR.
- // Reinforcement layer: Tire cord helix wire.
- // Cover rubber layer: CR and NR blend.
- // Temperature Range: -30°C to 80°C
- // Notes: Not bend over bending diameter,not squeeze over,avoid colliding flange surface.
- // Application: The steel flange suction hoses are used with dredgers for silt,gravels,port,dock,seawater, sand conveyance and discharging flood etc.
- // Characteristics: Flexible,Anti-wave,Wear-resistance,Weather-resistance,Aging-resistance,seawater resistance.

Product Number	inch in	ID mm	Outside mm	Working pressure		B.P		Length m	Unit Price USD/m
				bar	psi	bar	psi		
MD-6	6	152	182	12	174	24	348	20	*
MD-8	8	203	233	12	174	24	348	20	*
MD-10	10	254	284	10	145	20	290	10	*
MD-12	12	304	340	10	145	20	290	6-10	*
MD-14	14	350	390	10	145	20	290	6-10	*
MD-18	18	450	486	7	102	15	218	6-10	*
MD-22	22	550	590	7	102	15	218	6-10	*
MD-24	24	600	640	7	102	15	218	6-10	*
MD-28	28	700	750	7	102	15	218	6-10	*
MD-32	32	800	850	5	73	10	145	6-10	*
MD-40	40	1000	1050	5	73	10	145	6	*
MD-48	48	1200	1250	5	73	10	145	6	*
MD-52	52	1300	1350	5	73	10	145	6	*

Drilling Hose



- // Construction: It is composed of an inner rubber protection layer, middle rubber layer, steel wire spiraled layer and external rubber cover.
- // Application: It's used in oil fields, well cementing, well repairing, geological explorations, small drilling machine, and water conveyance at coal excavations. Used to carry slurry, water at environmental temperature and other fluid.

Product Number	Hose ID mm	W.D mm	C.O.D mm	Max W.P.		PP		Min B.P.		Min B.R. mm	Weight Kg/m	Unit Price USD/m
				Bar	Psi	Bar	Psi	Bar	Psi			
DH-2SP-64	64	73.4	77	103	1493	206	2987	309	4480	900	6.4	*
DH-2SP-76	76	93	98	103	1493	206	2987	309	4480	1200	8.5	*
DH-2SP-89	89	106	111	103	1493	206	2987	309	4480	1400	11	*
DH-2SP-102	102	119	124	103	1493	206	2987	309	4480	1400	13.6	*
DH-2SP-127	127	135	140	103	1493	206	2987	309	4480	1600	15.5	*
DH-2SP-152	152	173	180	103	1493	206	2987	309	4480	1700	18	*
DH-2SP-203	203	225	232	103	1493	206	2987	309	4480	3050	24	*
DH-2SP-254	254	280	288	103	1493	206	2987	309	4480	3810	30	*
DH-2SP-305	305	330	338	103	1493	206	2987	309	4480	4510	36	*
DH-4SP-38	38	52.5	55	350	5075	700	10143	875	12679	600	4.62	*
DH-4SP-45	45	58.8	62	350	5075	700	10143	875	12679	700	5.2	*
DH-4SP-51	51	65.5	69.3	350	5075	700	10143	875	12679	900	5.7	*
DH-4SP-64	64	79.9	84	350	5075	700	10143	875	12679	900	6.7	*
DH-4SP-76	76	104	109	350	5075	700	10143	875	12679	1200	16.2	*
DH-4SP-89	89	117	122	350	5075	700	10143	875	12679	1400	18.4	*
DH-4SP-102	102	129	135	350	5075	700	10143	875	12679	1400	20.3	*
DH-4SP-127	127	144.5	150.5	350	5075	700	10143	875	12679	1600	22.5	*
DH-4SP-152	152	184	192	160	2320	320	4640	480	6960	1700	24	*
DH-6SP-51	51	69.2	73	700	10150	1400	20300	1750	25400	900	6.2	*
DH-6SP-64	64	85	89.5	700	10150	1400	20300	1750	25400	900	7.4	*
DH-6SP-76	76	113.5	118.5	700	10150	1400	20300	1750	25400	1500	23.7	*
DH-6SP-89	89	124.5	129.5	700	10150	1400	20300	1750	25400	1500	26.6	*
DH-6SP-102	102	136.5	141.5	700	10150	1400	20300	1750	25400	1500	29.8	*

Cementing Hose



- // Inner Tube: Oil resistant special synthetic rubber.
- // Reinforcement: Six high tensile steel wire spirals.
- // Cover: Abrasion ozone and hydrocarbon resistant synthetic rubber.
- // Application: High pressure cement slurry transfer between pump manifold and cementing head
- // Temperature Range: -40°C to 121°C

Product Number	inch in	ID mm	C.O.D mm	Max W.P.		Min B.P.		Min B.R. mm	Weight Kg/m	Unit Price USD/m
				Bar	Psi	Bar	Psi			
CE-32-51	2	51	72.0	345	5000	863	12500	900	6.56	*
CE-32-51	2	51	72.0	690	10000	1553	22500	900	6.69	*

Oil Stand Hose



- // Inner Tube: Oil resistant special synthetic rubber.
- // Reinforcement: One high tensile steel wire braid.
- // Cover: Oil and weather resistant synthetic rubber.
- // Application: For general refueling equipment to convey aviation kerosene, gasoline, diesel oil and other mineral oil.
- // Temperature Range: -40°C to 121°C

Product Number	inch in	ID mm	W.D mm	C.O.D mm	Max W.P.		Min B.P.		Min B.R. mm	Weight Kg/m	Unit Price USD/m
					Bar	Psi	Bar	Psi			
OI-10-16	5/8	16	22	25.0	18	232	72	928	160	0.59	*
OI-12-19	3/4	19	26	29.5	18	232	72	928	190	0.70	*
OI-16-25	1	25	34	36.5	18	232	72	928	240	0.93	*

Sandblasting Hose



- // Inner tube: Black synthetic rubber
- // Reinforcement: Tire cord with helix wire
- // Cover: Weather and abrasion resistant synthetic rubber
- // Temperature Range: -30°C to 80°C
- // Application: Handles casting, steel, stone, sand, cement and other abrasive materials in sandblasting service.

Product Number	inch in	ID mm	EL ply	C.O.D mm	Max W.P.		Weight Kg/m	Unit Price USD/m
					Bar	psi		
SA-12-19	3/4	19	2	32.4	12	175	0.73	*
SA-16-25	1	25	2	38.4	12	175	0.90	*
SA-20-32	1-1/4	32	2	48.0	12	175	1.31	*
SA-24-38	1-1/2	38	2	55.0	12	175	1.64	*
SA-32-50	2	51	4	69.8	12	175	2.45	*
SA-40-64	2-1/2	64	4	83.6	12	175	2.97	*
SA-48-76	3	76	4	97.6	12	175	3.85	*
SA-64-102	4	102	6	126.4	12	175	5.74	*

Pilot Line Hose



- // Inner tube: Synthetic rubber
- // Reinforcement: One braid of high-tensile steel wire
- // Cover: Environment resistant synthetic rubber
- // Application: Mineral and bio-oils, gum water-based, water, lubricants. Particularly suitable for medium pressure and return lines in equipment hydraulic control systems
- // Temperature Range : -40°C to 100°C (-40°F to 212°F)

Product Number	inch in	ID mm	C.O.D mm	Max W.P.		Min B.P.		Min B.R. mm	Weight Kg/m	Unit Price USD/m
				Bar	Psi	Bar	Psi			
XS-03-05	3/16	5.0	10.5	140	2030	560	8120	25	0.14	*
XS-04-06	1/4	6.6	11.1	140	2030	560	8120	25	0.14	*
XS-05-08	5/16	8.2	13.2	140	2030	560	8120	30	0.19	*
XS-06-10	3/8	10.0	15.1	140	2030	560	8120	30	0.23	*

Concrete Hose



- // Material: Synthetic rubber
- // Construction: This hose consists of an inner tube of high abrasion resistance synthetic rubber, high-pressure steel cord spiral reinforcements and weather resistant synthetic rubber cover.
- // Application: Hose range suitable to transport concrete for bridge, construction, tunnel, road etc.

Product Number	inch in	ID mm	C.O.D mm	Max W.P.		Min B.P.		Min B.R. mm	Weight Kg/m	Unit Price USD/m
				Bar	Psi	Bar	Psi			
CO-32	1-1/4	32	46	85	1233	200	2900	270	2.40	*
CO-38	1-1/2	38	54	85	1233	200	2900	290	2.60	*
CO-51	2	51	69	85	1233	200	2900	360	2.80	*
CO-64	2-1/2	64	87	85	1233	200	2900	420	4.30	*
CO-76	3	76	103	85	1233	200	2900	470	6.00	*
CO-89	3-1/2	89	117	85	1233	200	2900	510	7.50	*
CO-102	4	102	132	85	1233	200	2900	720	8.00	*
CO-127	5	127	157	85	1233	200	2900	950	10.00	*
CO-152	6	152	185	85	1233	200	2900	1100	17.00	*

Metal Hose

- // Inner core: Corrugated stainless steel
- // Outer core: Braided stainless steel layer
- // Application: It is mainly used in high temperature surroundings and in conditions having heatsource or heat radiation source, such as oil field well-contril, metal smelts, and chemical industry.
- // Temperature Range: Up to 750°C

Type	inch in	W.P. Bar	P.P. Bar	B.P. Bar	MinB.R		Sctew thread				Metric Screw M	Unit Price USD/m	
					mm	mm	d	Q	P	T			U
10	1/4	25	37	100	65	145	7	90	60	4	14	18 X 1.5	*
12	3/8	16	24	64	70	160	9	95	65	4	14	20 X 1.5	*
14	1/2	16	24	64	75	175	11	95	65	4	14	22 X 1.5	*
15	1/2	16	24	64	80	180	12	105	75	4	14	24 X 1.5	*
16	1/2	16	24	64	85	210	13	105	75	4	14	27 X 1.5	*
18	3/4	16	24	64	110	220	15	105	75	4	14	30 X 1.5	*
20	3/4	16	24	64	120	270	16	105	75	4	14	33 X 2	*
22	3/4	16	24	40	136	320	18	115	85	4	14	36 X 2	*
25	1	16	24	40	160	360	21	115	85	4	14	39 X 2	*
30	1-1/4	16	24	40	170	390	25	115	100	4	18	42 X 2	*
32	1-1/4	16	24	40	175	400	28	140	100	4	18	48 X 2	*
38	1-1/2	16	24	40	200	480	34	150	110	4	18	56 X 2	*
40	1-1/2	16	24	40	225	410	37	150	110	4	18	58 X 2	*
42	1-1/2	16	24	40	250	450	37	150	110	4	18	60 X 2	*
48	2	16	24	40	270	600	43	165	125	4	18	68 X 2	*
50	2	12	18	35	280	640	45	165	125	4	18	68 X 2	*
65	2-1/2	12	18	35	360	700	65	185	145	4	18	offered by buyer	*

A/C HOSE



- SAE J2064 TYPE E**
- // Inner tube: EPDM / CSM / IIR
- // Reinforcement: PET/PVA(Braiding)
- // Cover: EPDM
- // Application: For A/C system buses & trucks, conveying R134a, R12, R404a
- // Temperature Range: -40°C to 135°C (-40°F to 275°F)

Product Number	inch in	ID mm	C.O.D mm	Thickness mm	Max W.P.		Min B.P.		Min B.R. mm	Unit Price USD/m
					Bar	Psi	Bar	Psi		
AC-05-08	5/16	8.2	19	0.4	35	500	210	3000	55	*
AC-06-10	13/32	10.5	23	0.4	35	500	210	3000	65	*
AC-08-12B	1/2 B	13	23	0.4	35	500	210	3000	70	*
AC-08-12A	1/2 A	13	25.4	0.4	35	500	210	3000	75	*
AC-10-16	5/8	16	28.6	0.4	15	200	180	2600	85	*
AC-12-19	3/4	19	28.6	0.4	15	200	120	1700	100	*
AC-18-28	9/8	28	40	0.4	15	200	120	1700	150	*
AC-05-08T	5/16	8.2	15.2	0.4	35	500	210	3000	55	*
AC-06-10T	13/32	10.2	17.2	0.4	35	500	210	3000	65	*
AC-08-12T	1/2	13	21	0.4	35	500	210	3000	75	*
AC-10-16T	5/8	15.2	23	0.4	35	500	180	2600	85	*
AC-12-19T	3/4	18.2	27.5	0.4	15	200	120	1700	100	*